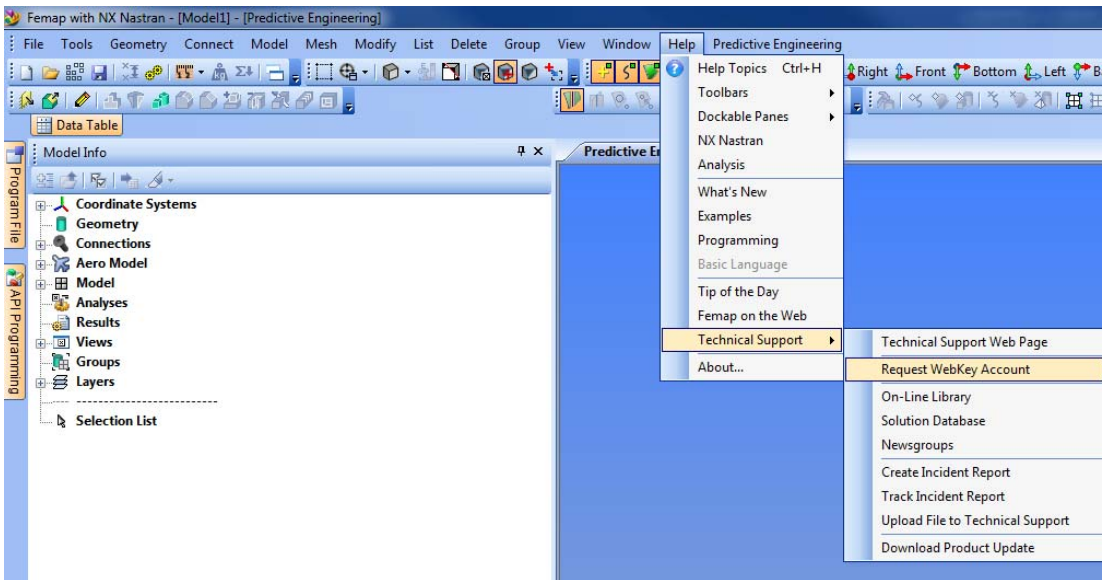


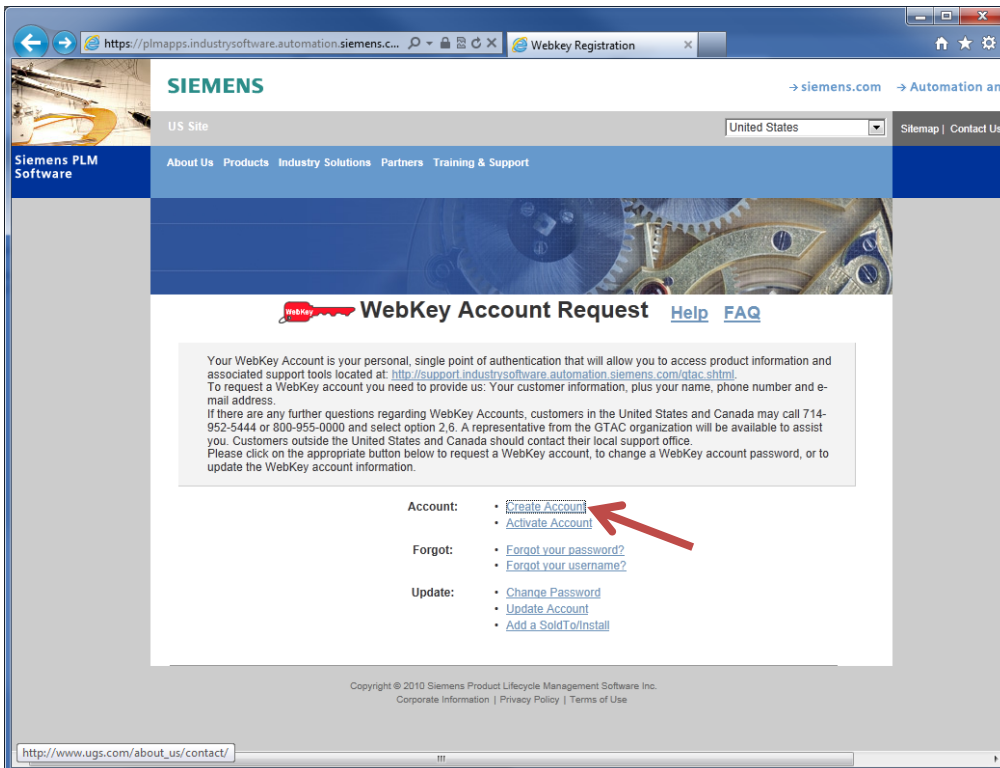
Visit Website

<https://plmapps.industrysoftware.automation.siemens.com/webkey/step1.jsp>

Help → Technical Support → Request WebKey Account

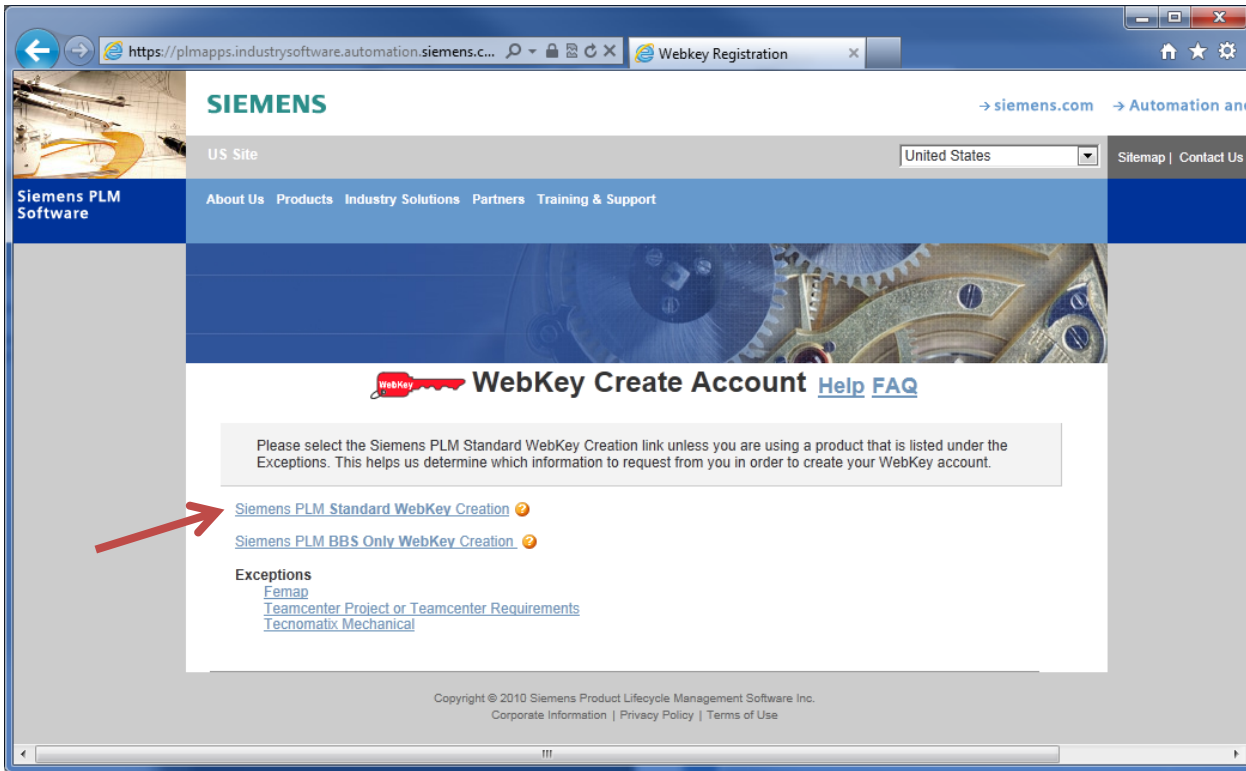


Create Account link



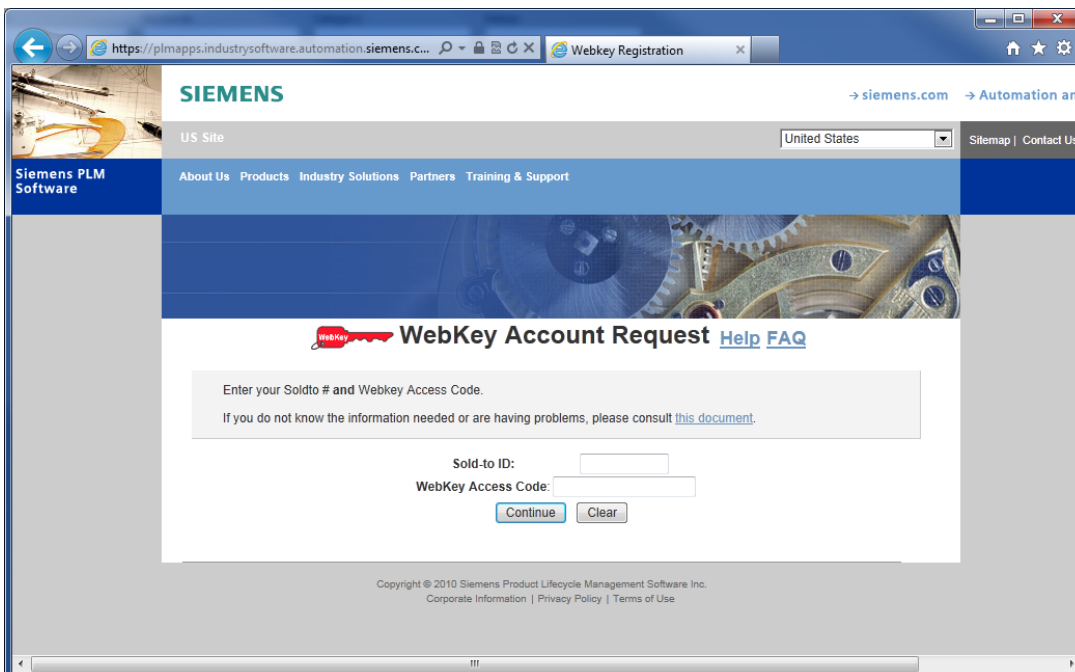


Siemens PLM Standard WebKey Creation link



Enter Sold-to ID and WebKey Access Code

On the next page you will be asked to enter your Sold-to ID and WebKey Access Code.





Sold-to ID

The sold-to ID is on the shipping order and the FlexLM license sheet. If you don't have this information contact your system manager (typically the IT department) or you can call:

- Siemens at 800-955-0000 at the prompt press 2 then 6
- Predictive Engineering at 503-206-5571

WebKey Access Code

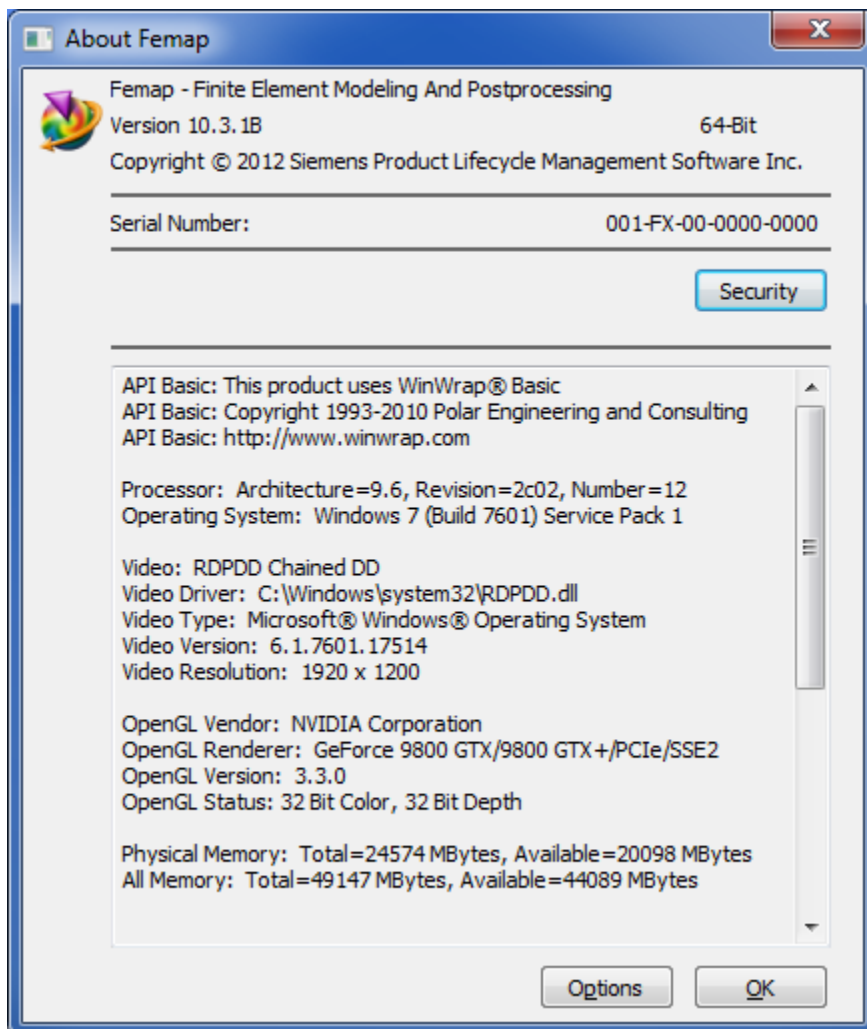
Dongle

WebKey Access Code is in the Serial Number:

0 0 1 - F X - 0 0 - 0 0 0 0 - 0 0 0 0

WebKey Access Code

The serial can be found on the dongle or by going to **Help → About**





Flex

The WebKey Access Code is the **Server Host ID** found by hitting the **Security** button from the **About** dialog.

